



Wittgenstein Centre

FOR DEMOGRAPHY AND
GLOBAL HUMAN CAPITAL

A COLLABORATION OF IIASA, VID/ÖAW, WU

Wittgenstein Centre

at PAA 2017



International Institute for
Applied Systems Analysis
www.iasa.ac.at



ÖAW

AUSTRIAN
ACADEMY OF
SCIENCES

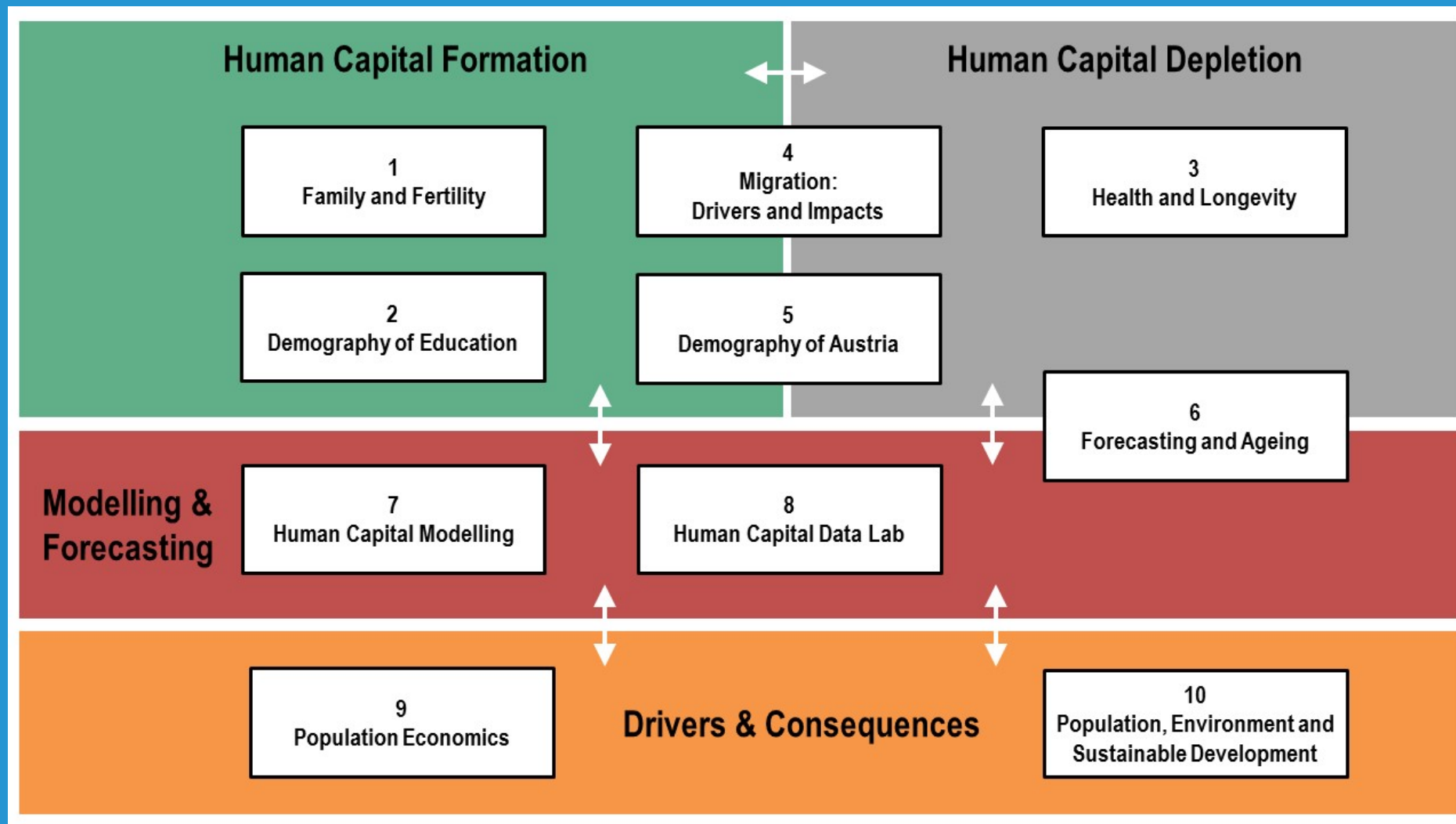


Mission Statement



The Wittgenstein Centre (WIC) aspires to be a world leader in the advancement of demographic methods and their application to the analysis of human capital and population dynamics. In assessing the effects of these forces on long-term human well-being, we combine scientific excellence in a multidisciplinary context with relevance to a global audience.

WIC Research Groups



1 Fertility and Family

The “Fertility and Family” research group covers a broad range of topics pertaining to fertility, fertility preferences, family formation, reproduction, partnerships, union formation and dissolution, couple dynamics and their interrelations.



2 Demography of Education

The “Demography of Education” research group uses mixed methods to conduct population-centred analyses of education policy and development, both globally and in a local context.



3 Health and Longevity

The main objective of the research group “Health and Longevity” is to disentangle the complex causation of healthy ageing. We want to better understand the factors and causal mechanisms that enable some (groups of) people to live longer and healthier than others.



4 Migration: Drivers and Impacts

The Research Group “Migration: Drivers and Consequences” is dedicated to the study of migration trends and their consequences on both sending and receiving countries. The team uses quantitative methods to develop new policy relevant knowledge.



5 Demography of Austria

Using quantitative data and methods, this research group currently exerts a service function regarding research data for the WIC and the scientific community at large; further-more, demographic analyses with a focus on Austria are on the research agenda.



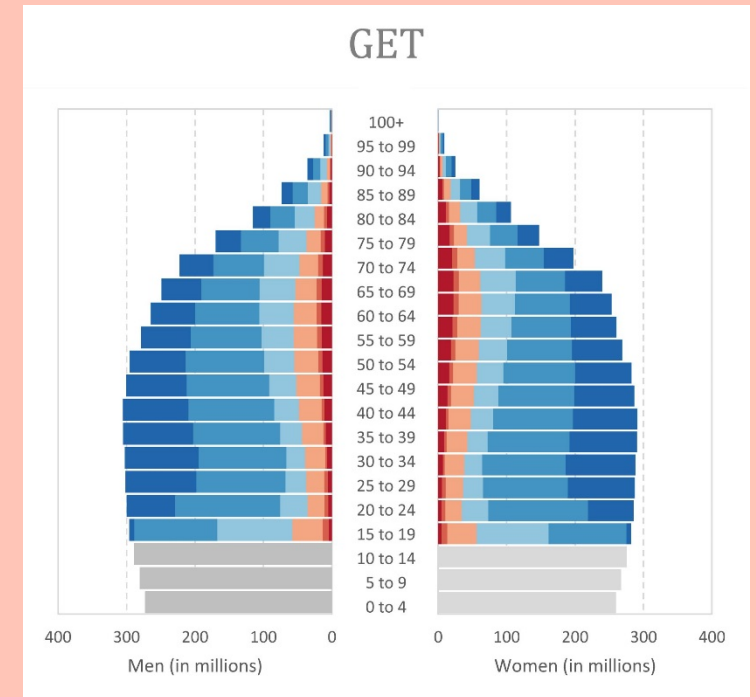
6 Forecasting and Ageing

The focus of this research group is on population dynamics, demographic analysis and forecasting. Main themes of the research are: population projections, methodological issues of projecting mortality and migration, and population ageing.



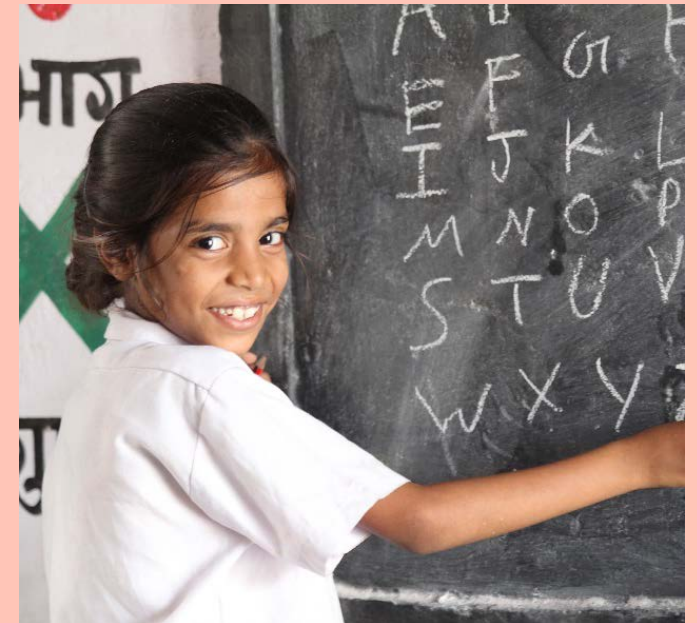
7 Human Capital Modelling

This group's main research activity is in developing methods and models to capture demography and human capital dynamics in a population from global to sub-national level.



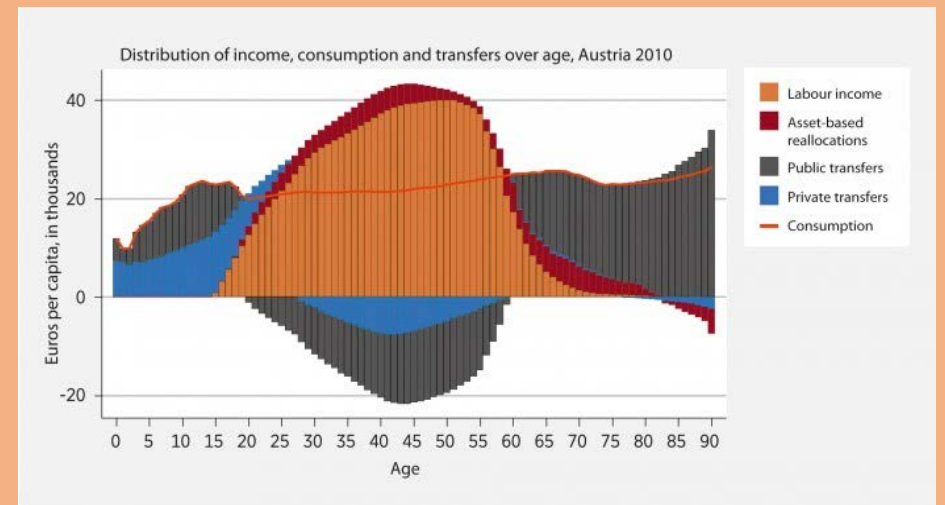
8 Human Capital Data Lab

This research group has two main functions. 1) To provide a service – in terms of human capital data collection, harmonisation and processing. 2) To contribute scientific evidence to the global research community on the role played by education through time, across countries and regions, and the influence it could further have on the future.



9 Population Economics

The group is investigating the interrelationship between population (structure and dynamics) and economic incentives, processes, and outcomes. Research is carried out into these complex processes using advanced methods drawn from several disciplines.



I 0 Population, Environment and Sustainable Development

The research group applies demographic concepts and analytical tools to empirically assess the complex relationship between population dynamics, environment and sustainable development.



WIC Cooperation: JRC



IIASA and JRC (Joint Research Centre of the European Commission) have established a joint Centre of Expertise on Migration and Demography - based at IIASA and JRC in Ispra (Italy).

It will apply multi-dimensional demographic tools to assess the impact of alternative future migration scenarios on Europe's population composition in the context of ageing.

WIC Internationalization: ADRI



Together with the University of Shanghai, IIASA's World Population Program has established the Asian Demographic Research Institute (ADRI). The institute also serves as new headquarter of the Asian MetaCentre for Population and Sustainable Development.

ADRI has the mission to focus on comparative demographic analysis in Asia.

New ERC-Grants at WIC



ERC Consolidator Grant 2016 P.I. Marc Luy

LETHE
Levels and Trends of
Health Expectancy:
Understanding its Measurement
and Estimation Sensitivity



ERC Advanced Grant 2017 P.I. Wolfgang Lutz

EMPOWERED LIFE
YEARS
The Demography of
Sustainable Wellbeing.



Ongoing ERC-Grant at WIC



ERC Advanced Grant RE-AGING
Reassessing Aging from a Population Perspective
P.I.: Sergei Scherbov
ERC-323947, 01.04.2013 - 31.03.2018



The Reassessing Aging from a Population Perspective (Re-Aging) project develops new approaches to the study of age and aging that are appropriate for 21st century conditions.

Third-party funded projects at WIC 1/3

- * AGENTA – Ageing Europe: An application of National Transfer Accounts (NTA) for Explaining and Projecting Trends in Public Finances
- * AgeWellAccounts – Age-Specific Wellbeing- and Transfer Accounts: Evaluating Intergenerational Support
- * ATHLOS – Ageing Trajectories of Health: Longitudinal Opportunities and Synergies
- * BIGMIG – Combining Traditional and Emerging Big Data Sources to Model Population Movement Patterns

Third-party funded projects at WIC 2/3

- * FERTUFORM – Early Fertility Desires: Hidden Drivers of Union Formation?
- * EDU20C – Reconstructing educational attainment of populations in the 20th Century
- * MEDPRO – Medical Progress, Health Expenditure and Pop.Ageing
- * MIGRED – Global Migration and Educational Expansion: Scenarios and Projections of population-level interactions
- * Ora Et Labora: A study about the impacts of the longer working lifetime of the religious in Vienna on their health and quality of life

Third-party funded projects at WIC 3/3

- * RAC – Running Against the Clock investigates the influence of life course circumstances on the realisation of individuals' fertility plans.
- * SR Health – APCC Special Report: Health, Demography and Climate Change
- * Sustainable European Welfare Societies: Assessing Linkages Between Social and Environmental Policy
- * The Wittgenstein Prize has made it possible to found the Wittgenstein Centre for Demography and Global Human Capital

WIC Data Explorer

The Wittgenstein Centre Data Explorer provides data, projection assumptions, and results on the population of all world countries (195) by age, sex, and education for alternative scenarios from 2010 to 2060 with extensions to 2100, based on a half-dozen scenarios. Other indicators related to fertility, mortality and migration are also available. There is the option of consulting the data online or downloading into a file (CSV).

www.wittgensteincentre.org/dataexplorer

**Why not take a
look right away on
our notebook?**

WIC Data Explorer



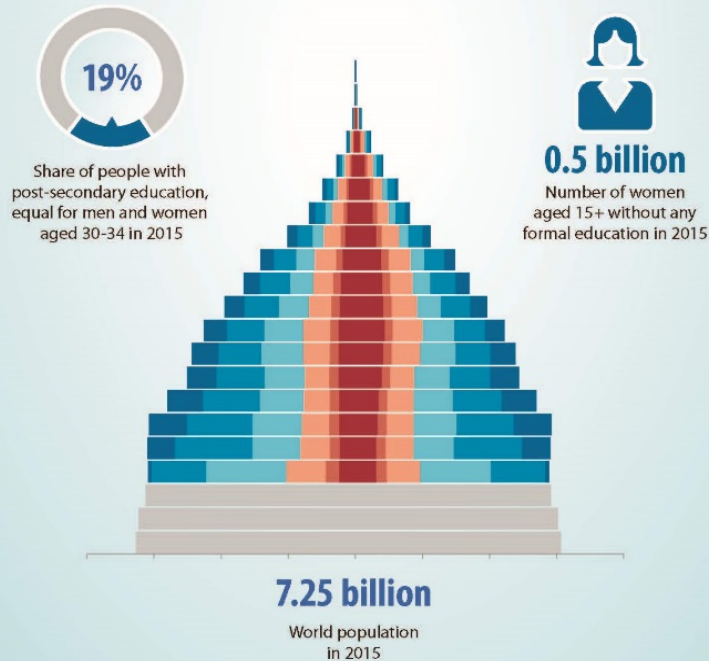
Why not take a look right away on our notebook?

Global Human Capital Data Sheet 2015



Wittgenstein Centre

Global Human Capital Data Sheet 2015



This data sheet illustrates that investments in human capital, especially (female) education, are critical for global sustainable development. The new population projections are presented by age, sex, and level of educational attainment for the world, world regions, and 195 individual countries (24 countries with limited education data) with a time horizon to 2060.



Wittgenstein Centre
FOR DEMOGRAPHY AND
GLOBAL HUMAN CAPITAL
A COLLABORATION OF IASA, IHD, AND ILO



www.wittgensteincentre.org/dataexplorer

European Demographic Data Sheet 2016



Wittgenstein Centre



Wittgenstein Centre
FOR DEMOGRAPHY AND
GLOBAL HUMAN CAPITAL
A COLLABORATION OF IASA, VIEDUAP, HU



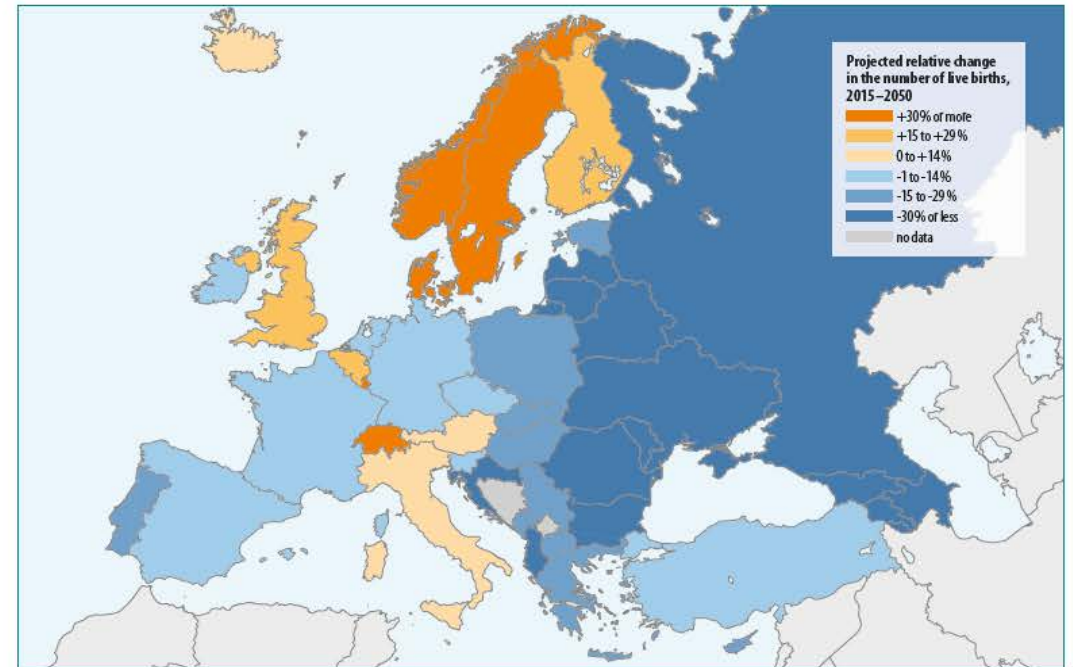
ÖAW

AUSTRIAN
ACADEMY OF
SCIENCES



International Institute for
Applied Systems Analysis
www.iasa.ac.at

European Demographic Data Sheet 2016



Migration **makes the difference**

More information: www.populationeurope.org

www.populationeurope.org

European Demographic Data Sheet 2016 Website



[HOME](#) [ABOUT](#) [DATA](#) [MAPS](#) [PYRAMIDS](#) [RANKINGS](#) [GLOSSARY](#)

EUROPEAN DEMOGRAPHIC DATA SHEET 2016

EXPLORE, VISUALIZE, AND COMPARE POPULATION INDICATORS, CHARTS, AND MAPS FOR 49 EUROPEAN COUNTRIES.

[DOWNLOAD DATASHEET POSTER](#)

MAPS



RANKINGS



COUNTRY DATA



PYRAMIDS

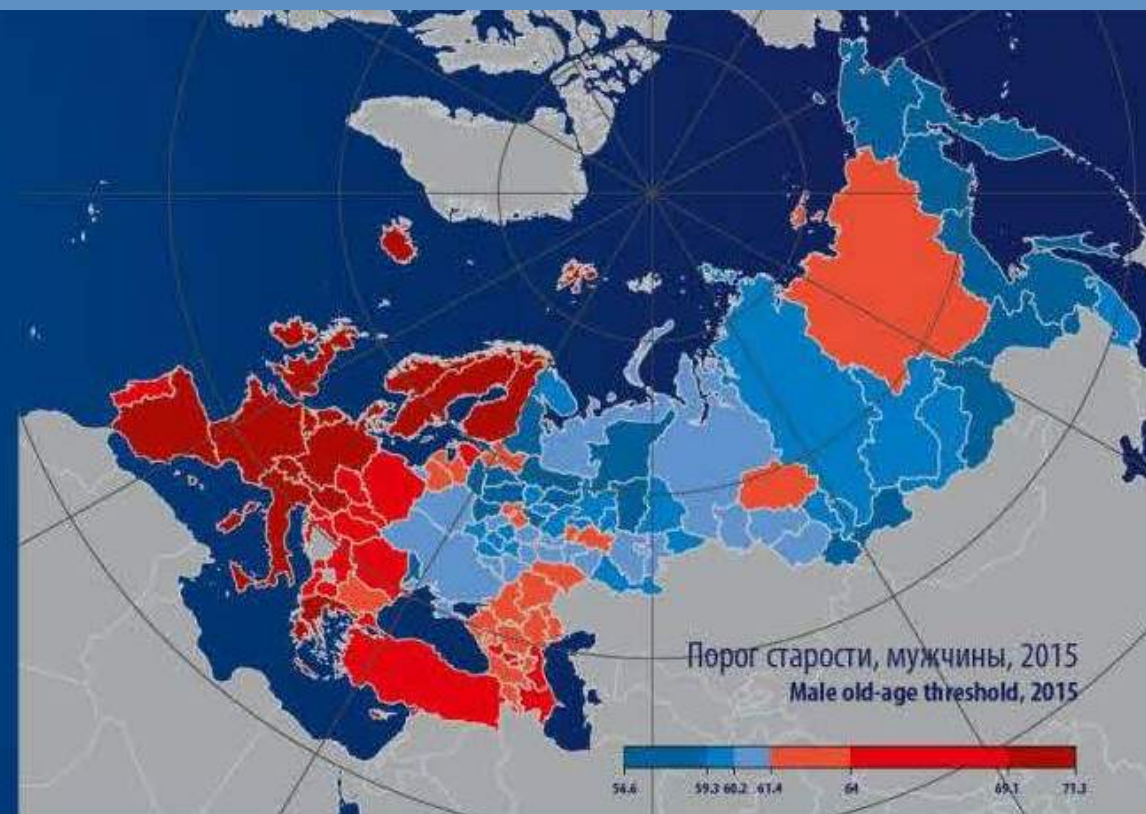
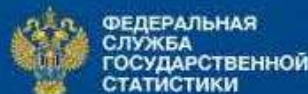


www.populationeurope.org

Russian Demographic Data Sheet 2016



Российский 2016 демографический лист Russian Demographic Data Sheet



<http://www.populationrussia.ru/eng/>

European Fertility Datasheet 2015



EUROPEAN FERTILITY DATASHEET 2015



COMPLETED COHORT FERTILITY, WOMEN BORN 1972

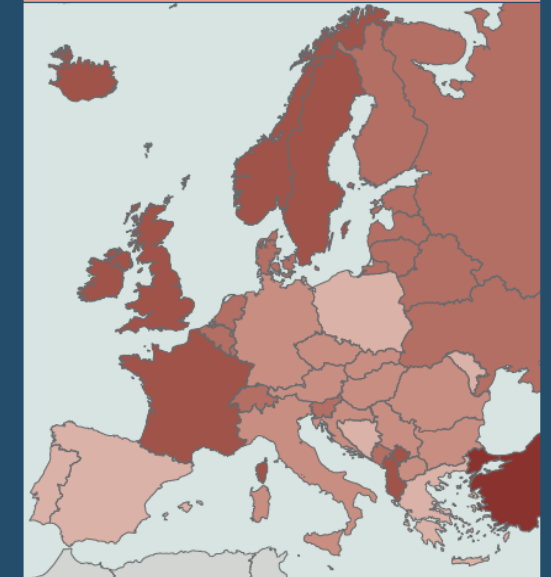


Children per Woman

Min: Spain 1.43 | Max: Kosovo 2.90

less than 1.29 1.30 to 1.49 1.50 to 1.74 1.75 to 1.99 more than 2.00 no data

TOTAL FERTILITY RATE, 2013



Min: Portugal 1.21 | Max: Turkey 2.08

www.fertilitydatasheet.org



Wittgenstein Centre

FOR DEMOGRAPHY AND
GLOBAL HUMAN CAPITAL

A COLLABORATION OF IIASA, VID/ÖAW, WU

**This presentation is available as download on our
Wittgenstein Centre Website in the News section:
“The Wittgenstein Centre at the PAA Annual Meeting 2017”**

www.wittgensteincentre.org



International Institute for
Applied Systems Analysis
www.iiasa.ac.at



ÖAW

AUSTRIAN
ACADEMY OF
SCIENCES

WU

WIRTSCHAFTS
UNIVERSITÄT
WIEN VIENNA
UNIVERSITY OF
ECONOMICS
AND BUSINESS